

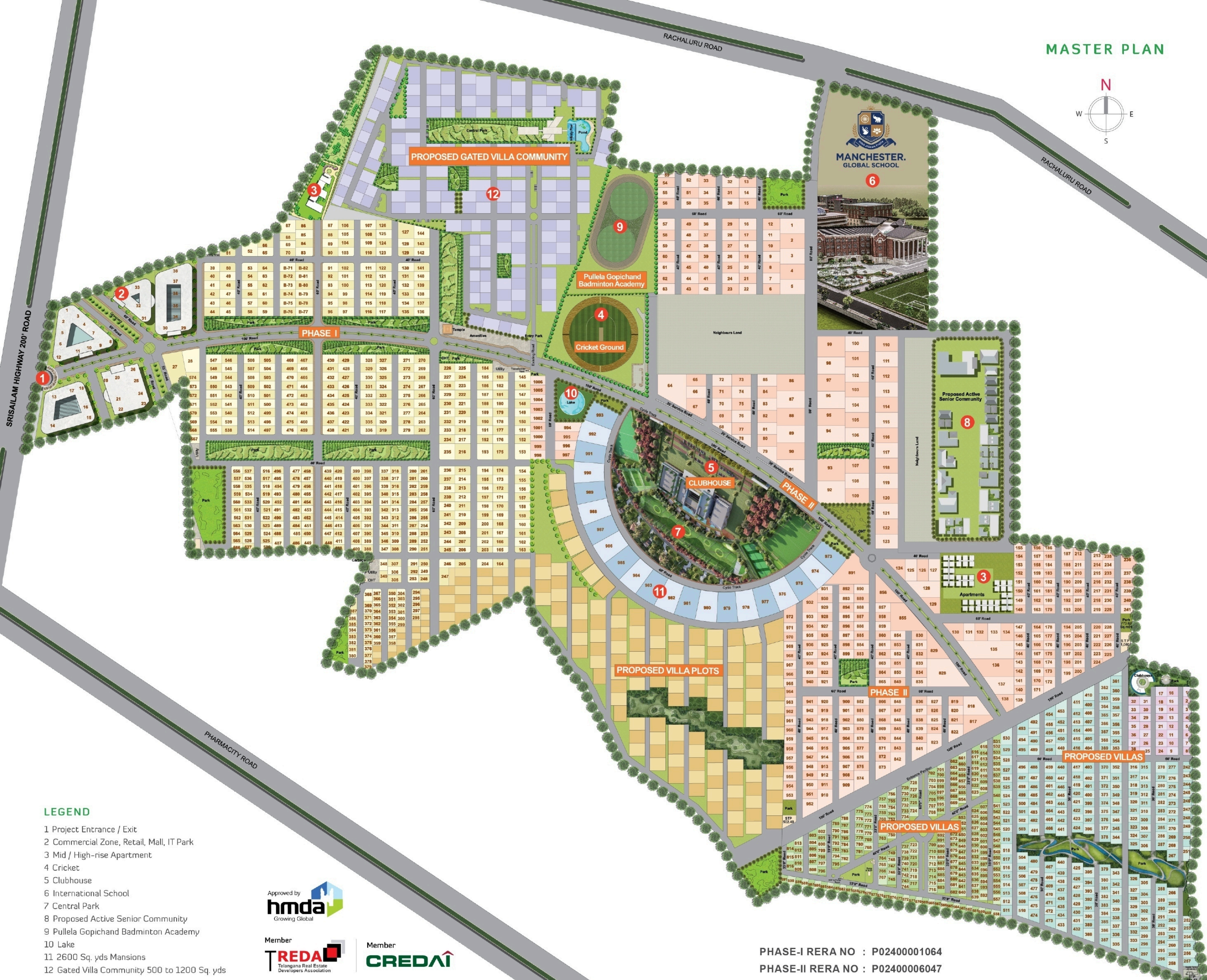
MASTER PLAN



INTEGRATED TOWNSHIP  
ON SRISAILAM HIGHWAY @  
THUMMALURU, SHAMSHABAD

**500**  
ACRES

STARTING FROM  
300 TO 3000 SQUARE YARDS



- LEGEND**
- 1 Project Entrance / Exit
  - 2 Commercial Zone, Retail, Mall, IT Park
  - 3 Mid / High-rise Apartment
  - 4 Cricket
  - 5 Clubhouse
  - 6 International School
  - 7 Central Park
  - 8 Proposed Active Senior Community
  - 9 Pullela Gopichand Badminton Academy
  - 10 Lake
  - 11 2600 Sq. yds Mansions
  - 12 Gated Villa Community 500 to 1200 Sq. yds

Approved by **hmda** Growing Global

Member **TREDA** Telangana Real Estate Developers Association

Member **CREDAI**

PHASE-I RERA NO : P02400001064  
PHASE-II RERA NO : P02400006047

**For More Details**  
Contact | 9505572859

Note: The brochure is only a conceptual presentation. Developers reserve the right to change or alter the plan time to time, as deemed fit.





GRAND ENTRANCE VIEW

## Live Life you are meant to.

Greenrich Highlands is quite the planned community that will take you by delight and amazement. To start with, the bundle of amenities and its green-centric planning will impress you as they occupy the prime features of the design philosophy – whether you are here to work, live, play, learn and even for health and wellness. Importantly, all features around these are conveniently located within 450 m of walking distance from any given residential plot.

We encourage walking and cycling as the primary means of commuting within the campus, in addition to electric vehicles. Also at the core of the development is a Central Clubhouse with comprehensive facilities in approximately 20 acres of net area and 20 acres of open fields. The facilities include a plethora of features for the members.

world class CLUBHOUSE

## Zoom easily to where you wish.

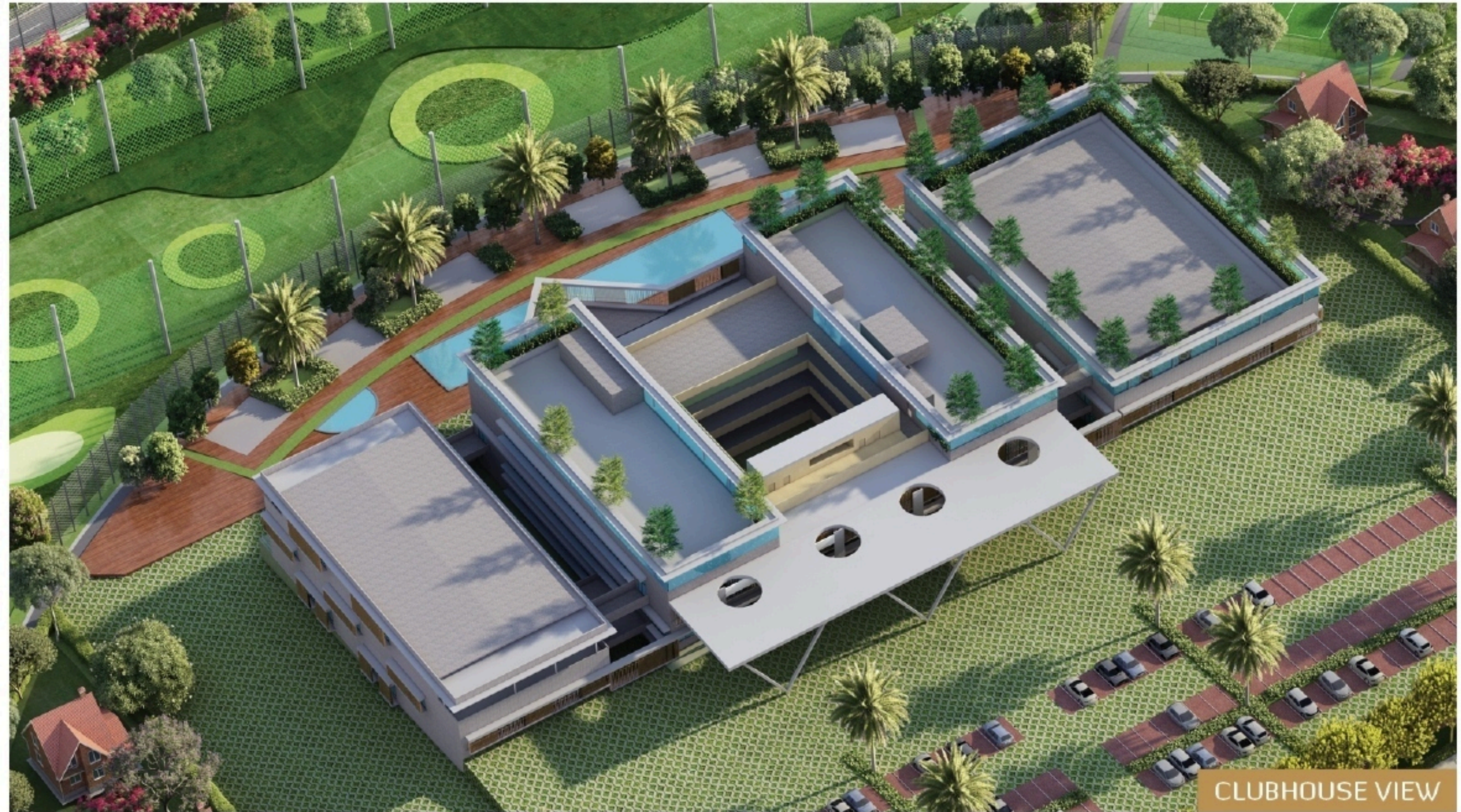
Quite like it should be, Greenrich Highlands is located in a locale that's all about solace and serenity. Take delight, as it is located nearest ORR entry and exit points. More importantly, it isn't too far from high-technology production centres at Fab City. All in all, it offers amazing connectivity to the rest of Hyderabad and beyond. If you are a frequent road-traveller, it's located on Srisailem Highway and 10 km south of the junction between Bangalore Highway towards Hyderabad.

- PROXIMITY**
- ORR, Fab City, Pharma City : 10 mins
  - Adibatla Aerocity, TCS : 10 mins
  - RR Collector Office, Foxconn : 10 mins
  - Adibatla IT Sez / Aerospace : 15 mins
  - International Airport : 15 mins
  - Gachibowli : 40 mins
  - LB Nagar 'X' Roads : 40 mins



### LOCATION MAP (NOT TO SCALE)

### INDOOR GAMES



CLUBHOUSE VIEW

### HOW ABOUT A LIFE

- ▶ THAT DRAPES YOU WITH NOTHING BUT TONS AND TONS OF NATURE?
- ▶ WHERE YOU'LL WAKE UP AND RETIRE IN CALMNESS NEVER EXPERIENCED BEFORE?
- ▶ THAT WILL HAVE YOU TRANSCENDING FROM FUN TO FABULOUSNESS EVERYDAY?
- ▶ AMIDST A 500-ACRE INTEGRATED TOWNSHIP WITH WHOLESOME AND LUXURIOUS LIVING?
- ▶ THAT'S CREATED ON GIVING YOU A HEALTHY LIFESTYLE AMIDST AN INNOVATIVE DESIGN?
- ▶ WHERE YOU ARE INSPIRED BY AN AMBIENCE THAT EMBRACES THE CORE OF NATURE?
- ▶ WHERE YOUR EVERYDAY WILL BE PAINTED WITH VASTNESS AND MORE VASTNESS?

### PUBLIC BUILDINGS & AMENITIES



### CLUBHOUSE AMENITIES



SIGNATURE MANSIONS VILLAS



### PROVISIONS

